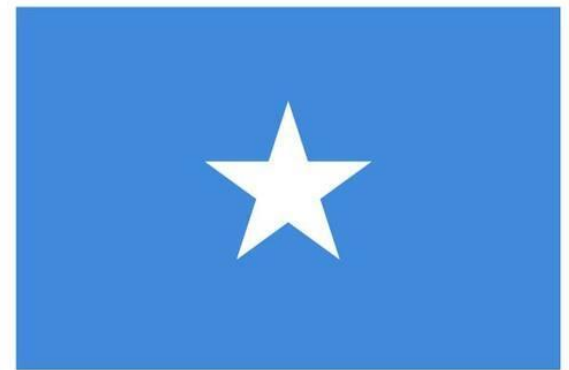




# SOMALIA GEOGRAPHY





## **Essential Question:**

How does the geography and climate of Somalia influence its people, their cultural practices and economic activities?



# LEARNING TARGET

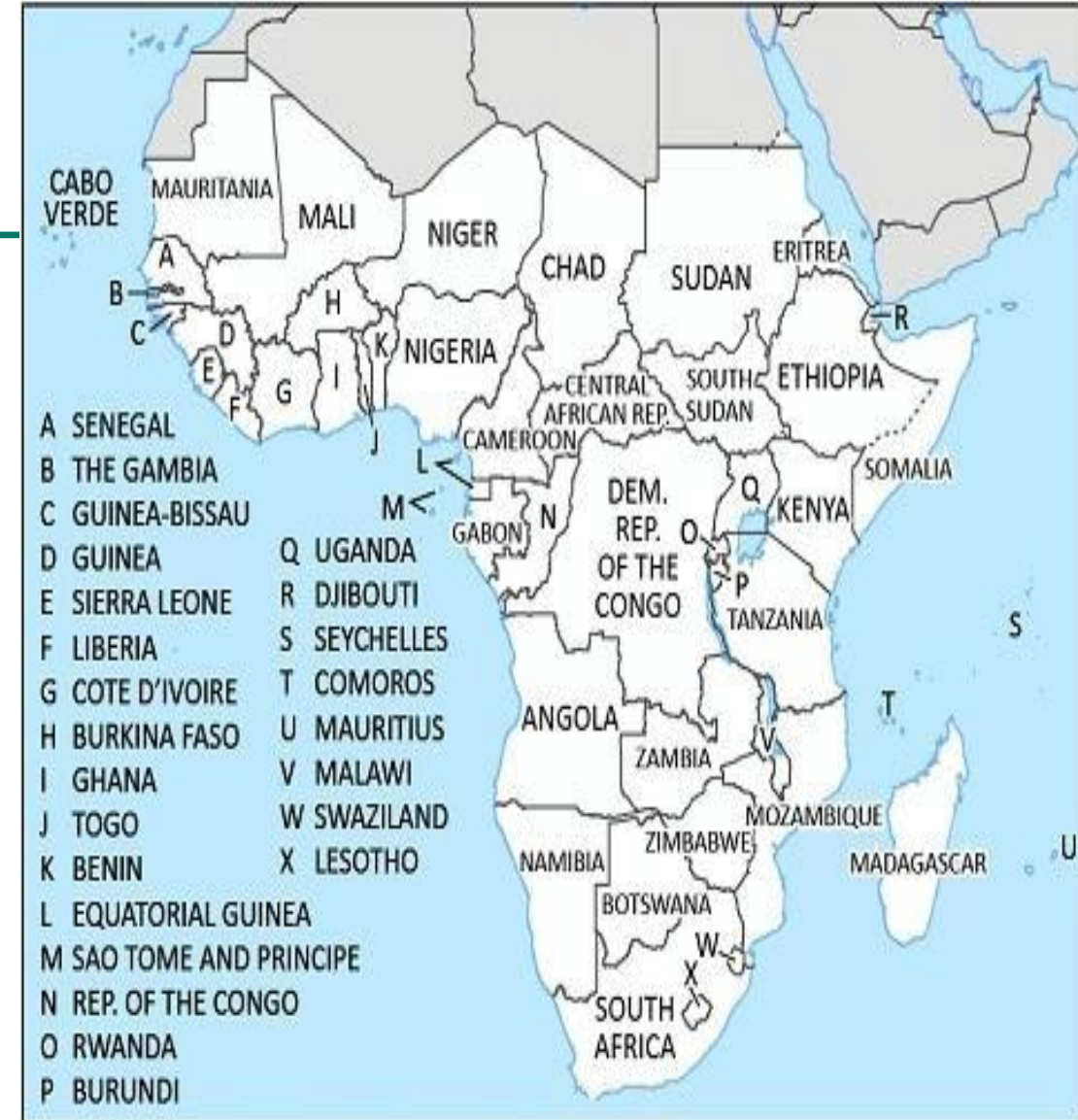
---

I can explain how Somalia's **geography** influences its people – their **culture and economy**, having examined the impact of its terrain, climate, and regional divisions.



# Geography

- Located in the far eastern part of Africa, known as the Horn of Africa, which includes Ethiopia and Djibouti.
- Land area: 637,540 square kilometers (246,241 square miles).
- Plains, plateaus, and highlands.



Boundary representation is not necessarily authoritative

# Regional Divisions

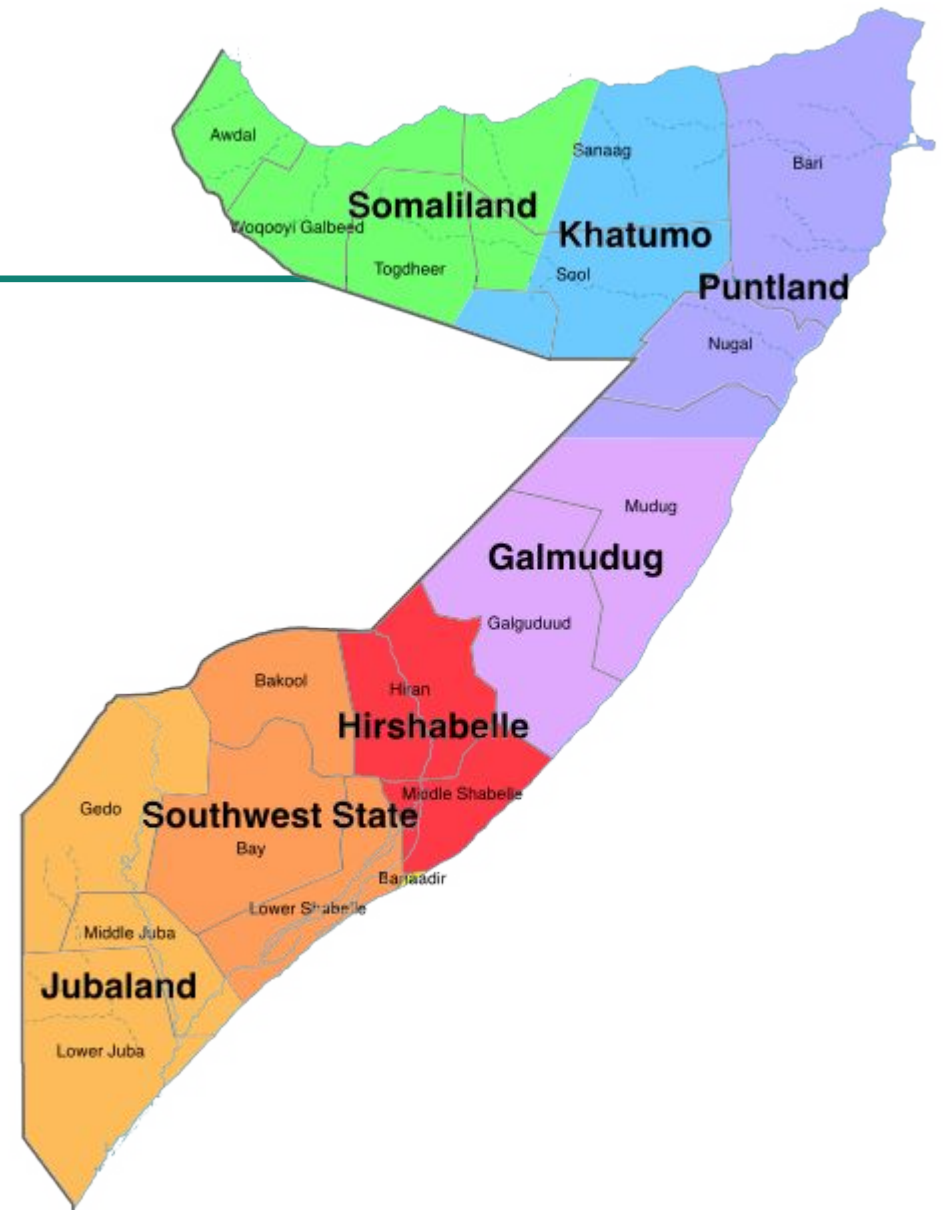
---

Divided into two main regions:

- **Somaliland** (located in the north)
- **Southern Somalia**

## Other Outlying Regions

- There are also three additional regions that are not part of current Somalia.



# Three Outlying Regions with Significant Somali Populations

## 1. Djibouti

- An independent state with a substantial Somali population.

## 2. Ogaden Region (Western Somalia)

- Now known as Somali State, this region is part of Ethiopia and is home to ethnic Somalis.

## 3. Northern Frontier Districts (NFD)

- This region is located in Kenya and also has a significant Somali population.



# Somali Administrative Provinces

---

- At the time of the civil war in 1991, Somalia was divided into 18 administrative provinces.

# Provinces

---

- Investigate how many of the 18 provinces from 1991 correspond to the current federal regions.
- Compare two regions and their provinces in terms of population size.

# CLIMATES & RIVERS

- Somalia's climate is primarily arid and semi-arid, characterized by low precipitation levels.
- Despite this, the country is home to some major rivers, including the **Shabelle** and **Juba**.
- The Shabelle River is the longest river in Somalia, stretching a total of 702 miles.



# SHABELLE RIVER

---

- The river originates in the highland area of Ethiopia and flows into Somalia.
- During the rainy seasons, it merges with the Juba River and ultimately empties into the Indian Ocean.
- Natural phenomena, such as evaporation, along with human activities like irrigation, can sometimes result in the river drying up.

# JUBBA RIVER

---

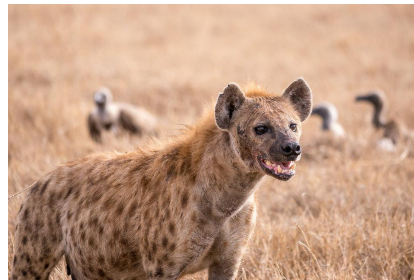
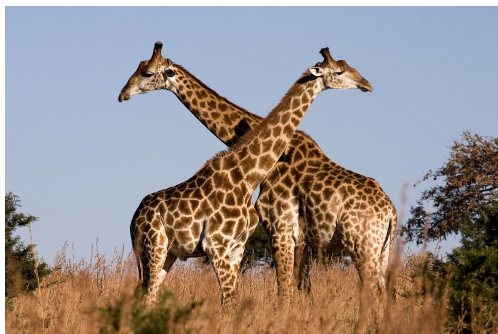
- The Jubba River is the second longest river in Somalia.
- Like the Shabelle River, it originates in Ethiopia.
- The Jubba River flows for approximately 624 miles.
- The regions surrounding the Jubba are known for being some of the most fertile farmland in Somalia.

# Somali Wildlife

---

The area around the two rivers, the Shabelle and Jubba, is home to a variety of wildlife, including:

- **Lions**
- **Gazelles**
- **Giraffes**
- **Hyenas**
- **Hippopotami**



# Somali Produce

---

The regions surrounding the Shabelle and Jubba rivers are vital for agricultural production and export crops.

Locally, Somalis grow:

- **Corn**
- **Sesame**
- **Fruits and Vegetables**

For export, the main crops include:

- **Bananas**
- **Sugar Cane**



# COASTLINE

---

- Somalia has the longest coastline in mainland Africa (3,333 km)
- The long coastline of Somalia allows trade with Middle East and East Asia.
- Fishing is also practiced in Somalia.
- <http://countrystudies.us/somalia/33.htm>

# ASSIGNMENT

---

- Watch a short Video (1 min.) of Somali's climate and environmental threats
  - [https://www.youtube.com/watch?v=\\_EfGBOn5s7Q](https://www.youtube.com/watch?v=_EfGBOn5s7Q)
- What are the environmental threats that Somali rivers face?
- Hand out the excerpt from Britannica.

<https://www.worldatlas.com/articles/major-rivers-of-somalia.html>

# TERRAIN

---

Somalia's terrain mainly includes plateaus, plains, and highlands.

- The Karkaar mountains are located in the far north near the Gulf of Aden.
- The climate is hot year-round, with most areas being arid to semi-arid and receiving little rain.

**Discussion:** What kind of life is suitable for this environment, and why?

# Four Seasons

---

- Somalia has four climatic seasons:
  - **Gu** (Spring): Rainy season from April to June.
  - **Xagaa** (Summer): Dry season from July to September, with coastal showers.
  - **Dayr**: (Autumn) Second rainy season from October to December.
  - **Jiilal**: (Winter) Dry season from January to March.

# METEOROLOGICAL SEASONS

---

- **Spring:** March 1 to May 31
- **Summer:** June 1 to August 31
- **Fall (Autumn):** September 1 to November 30
- **Winter:** December 1 to February 28